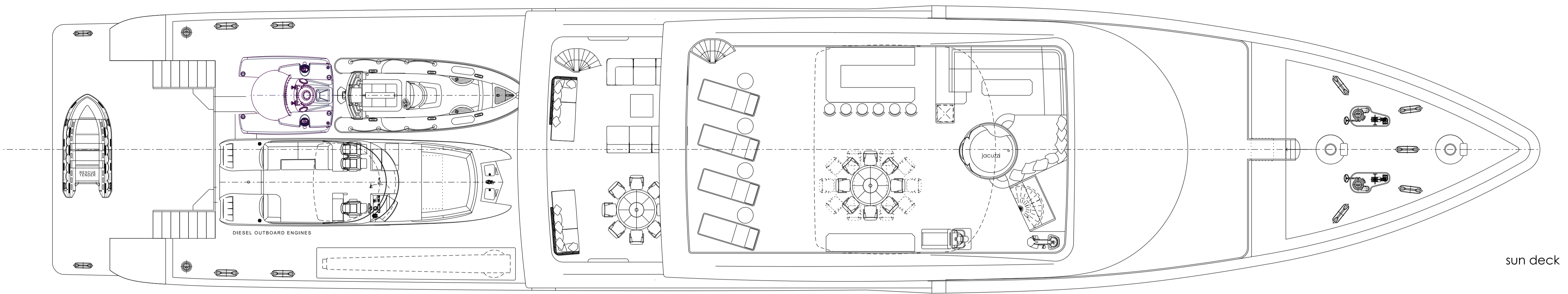
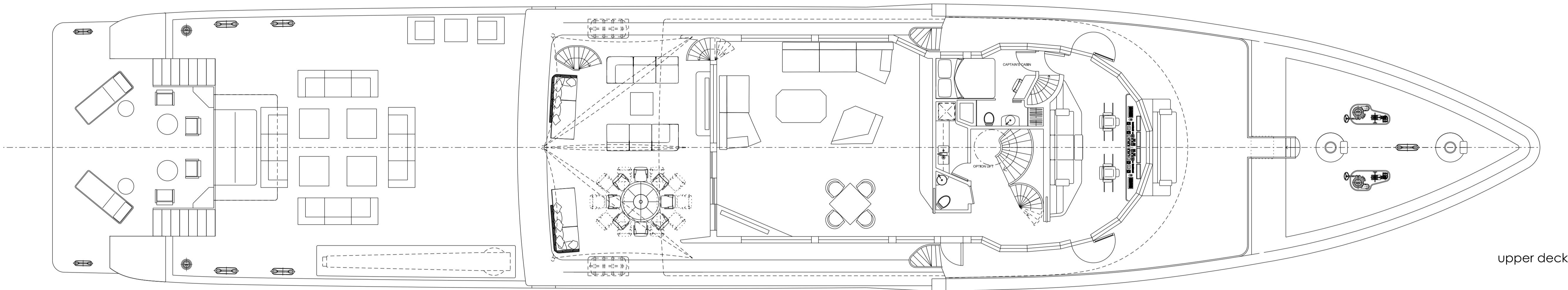


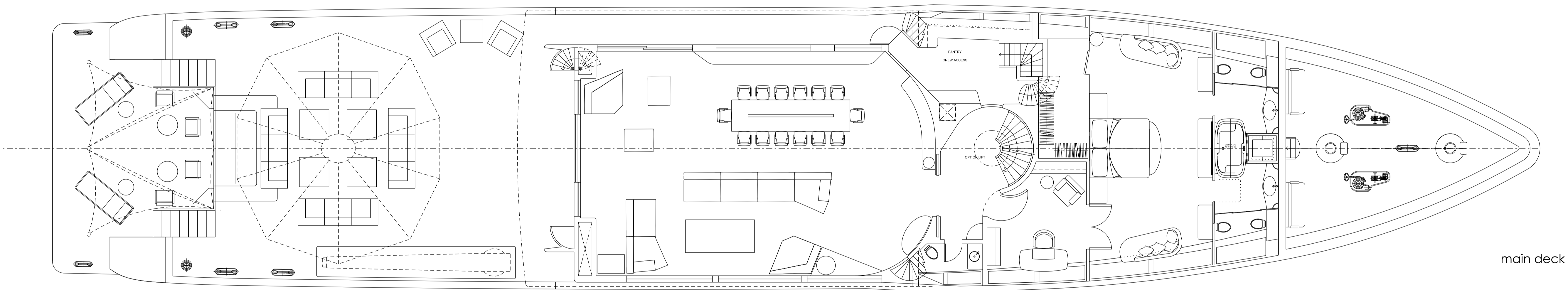
profile



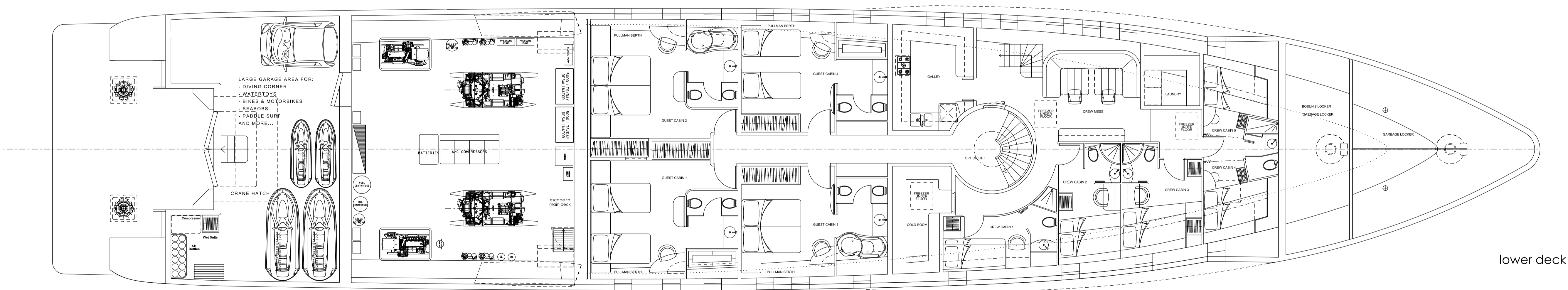
sun deck



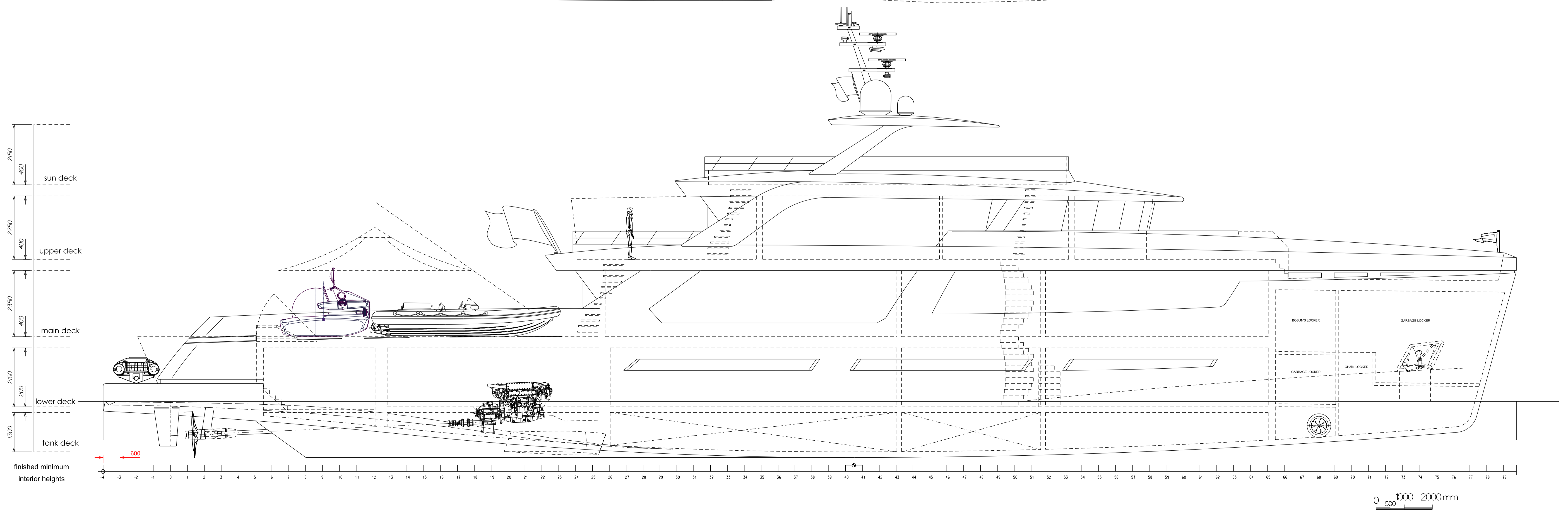
upper deck



main deck



lower deck

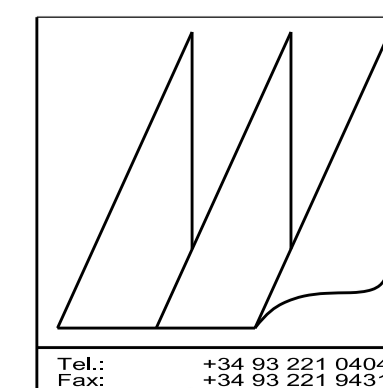


Overall length: 49.90 m  
 Length waterline: 48.70 m  
 Maximum beam: 9.85 m  
 Draft: 2.00 m  
 Displacement: 372 ton  
 Gross tonnage: 499 GT

Cruising speed: 15 kn  
 Maximum speed: 16 kn  
 Range (at 12 kn): +3000 nm  
 Range (at 10 kn): +6000 nm  
 Engines: 2x CAT 32 1000 bhp/746 bkW @ 1800 rpm  
 Generators: 2x CAT C4.4 86 kVA @ 1500 rpm  
 1x CAT C2.2 28 kVA @ 1500 rpm

Fuel tanks capacity: 80 m<sup>3</sup>  
 Fresh Water tanks capacity: 12 m<sup>3</sup>  
 Lub-oil tank capacity: 5 m<sup>3</sup>  
 Hydraulic oil tank capacity: 2 m<sup>3</sup>  
 LLOYD'S #100 A1 SSC YACHT MONO G6, @LMC,  
 UMS, MCA compl., LY3, Unrestricted, Green Label  
 10-12 Guests in 5 cabins / 12 Crew in 6 cabins

Waste oil tank capacity: 3 m<sup>3</sup>  
 Bilge water tank capacity: 3 m<sup>3</sup>  
 Grey & Black Water tank capacity: 8 m<sup>3</sup>  
 Stabilizers: Zero Speed  
 Bow thruster: 90kW  
 HR Steel hull/Aluminium superstructure  
 Tender's Deck (Main Deck aft): LOA up to 10m



Project: ICE Series - 50 m Explorer Yacht  
 Title: General Arrangement option 2  
 For:   
 dgn: 50mExplorerYacht-GA08  
 Revision No.: 01  
 Author: MP  
 Scale: 1:75

Drawing No.: ICE50-001-01-F0  
 Date: 06/10/21  
 Project No.: 547  
 Av. Icària 143 - 1<sup>a</sup> 08005 Barcelona

© Marcelo Penna Yacht Design  
 REPRODUCING OR TRANSMITTING IN ANY FORM OR BY ANY MEANS, WITHOUT PERMISSION IN WRITING FROM MARCELO PENNA YACHT DESIGN IS STRICTLY PROHIBITED. ALL RIGHTS ARE RESERVED.